

2

1

UNLESS OTHERWISE SPECIFIED

ERMCO COMPONENTS, INC.

DWG NO. 2B548092

SURFACES  
✓

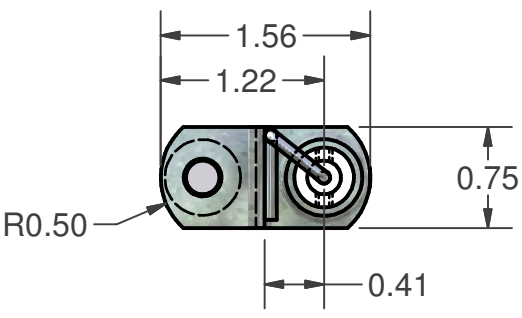
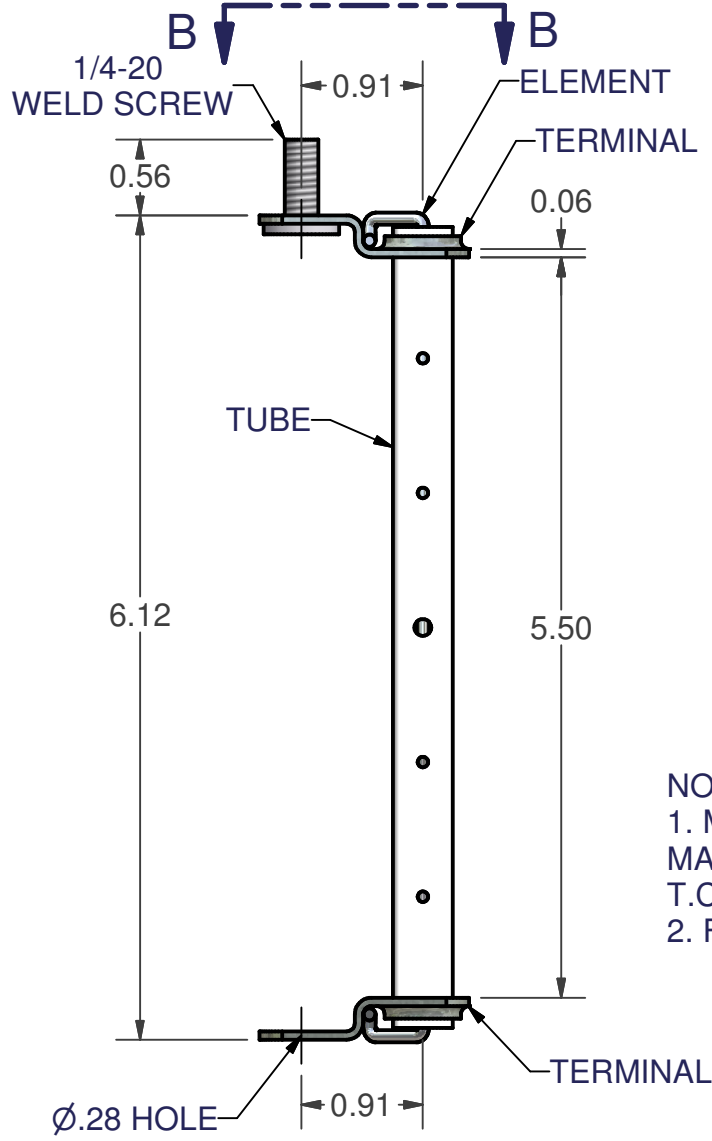
TOLERANCES		
2 PL DEC	3 PL DEC	ANGLES
± .03	±	±

THE INFORMATION CONTAINED ON THIS DOCUMENT IS PROPRIETARY TO ERMCO COMPONENTS, INC. AND MAY NOT BE USED FOR ANY OTHER PURPOSES THAN THOSE EXPRESSLY AUTHORIZED BY ECI.

SH 1 NUMBER OF SHS. 2  
TITLE: **OUTLINE (EXPULSION FUSE)**  
FIRST MADE FOR:

MODEL NUMBER	TIME CURRENT CURVE NO.	MAXIMUM DESIGN KV	AMP RATING
9F54DDA101	C1 SEE NOTE 1	15	3
9F54DDA201	C2 SEE NOTE 1	15	4
9F54DDA301	C3 SEE NOTE 1	15	5
9F54DDA401	C4 SEE NOTE 1	15	7
9F54DDA501	C5 SEE NOTE 1	15	9
9F54DDA601	C6 SEE NOTE 1	15	10
9F54DDA701	C7 SEE NOTE 1	15	12
9F54DDA801	C8 SEE NOTE 1	15	15
9F54DDA901	C9 SEE NOTE 1	15	19
9F54DDB001	C10 SEE NOTE 1	15	24
9F54DDB101	C11 SEE NOTE 1	15	28

REVISIONS	



VIEW B-B

- NOTES:  
 1. MINIMUM MELTING T.C.C.-GES 8318  
 MAXIMUM TOTAL CLEARING  
 T.C.C.-GES 8308.  
 2. FOR VERTICAL MOUNTING ONLY.

PRINTS TO  
ECI-BTL

DRAWN BY: **R. GILLAND** ECN B098 5/8/2003  
 ISSUED BY: **R. GILLAND** 5/9/2003

APPROVAL

**ERMCO HICKORY**

DWG NO. 2B548092

SH 1 NUMBER OF SHS. 2  
TITLE: **OUTLINE (EXPULSION FUSE)**  
FIRST MADE FOR:

2

B-7

1

5/03